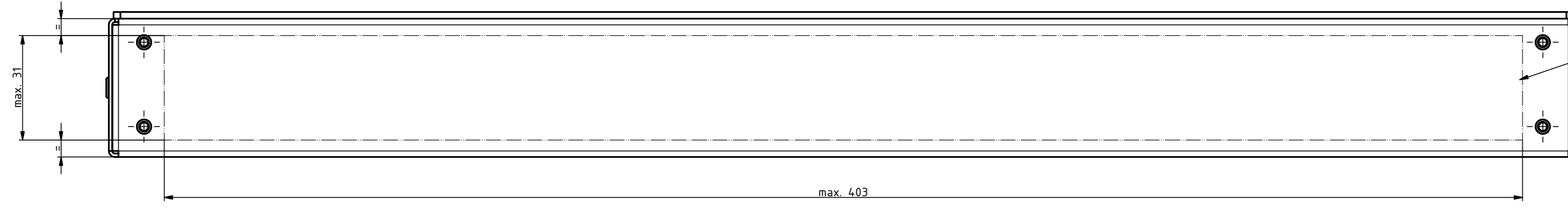
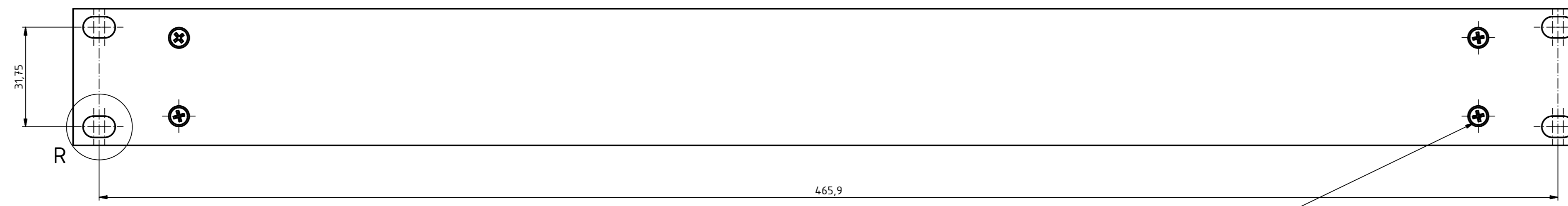


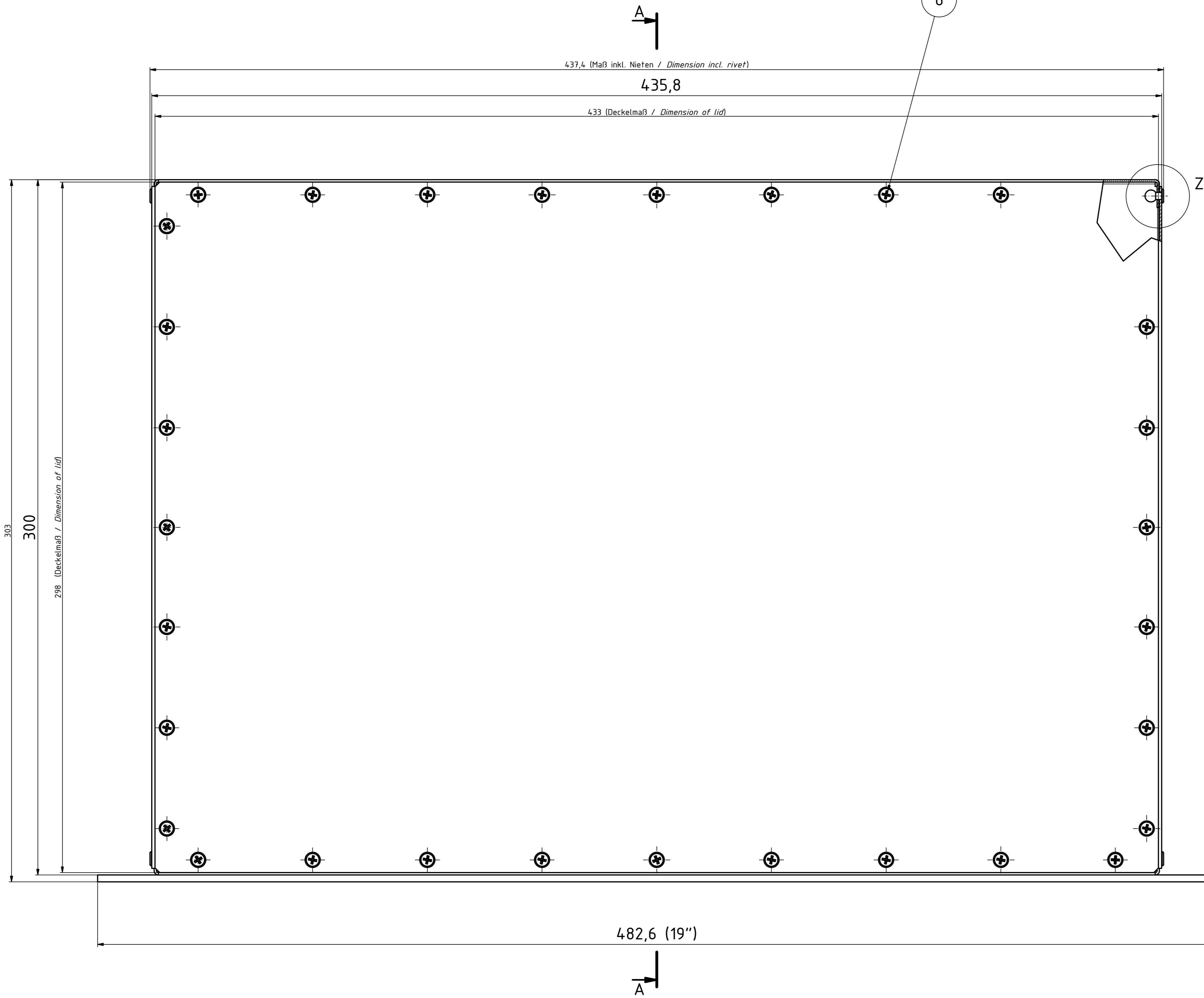
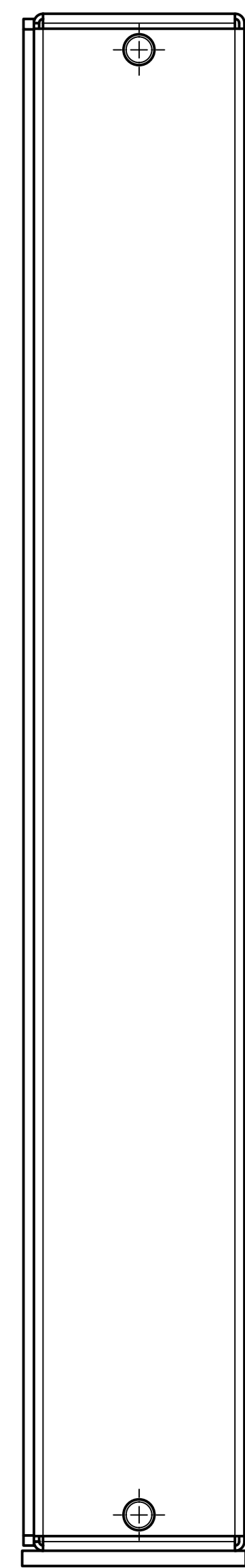
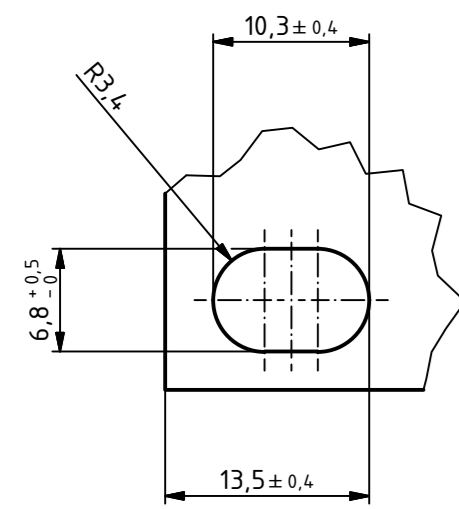
Frontansicht ohne Frontplatte / Front view without frontplate



Frontansicht / Front view



R (2:1)



Rückansicht / Rear view

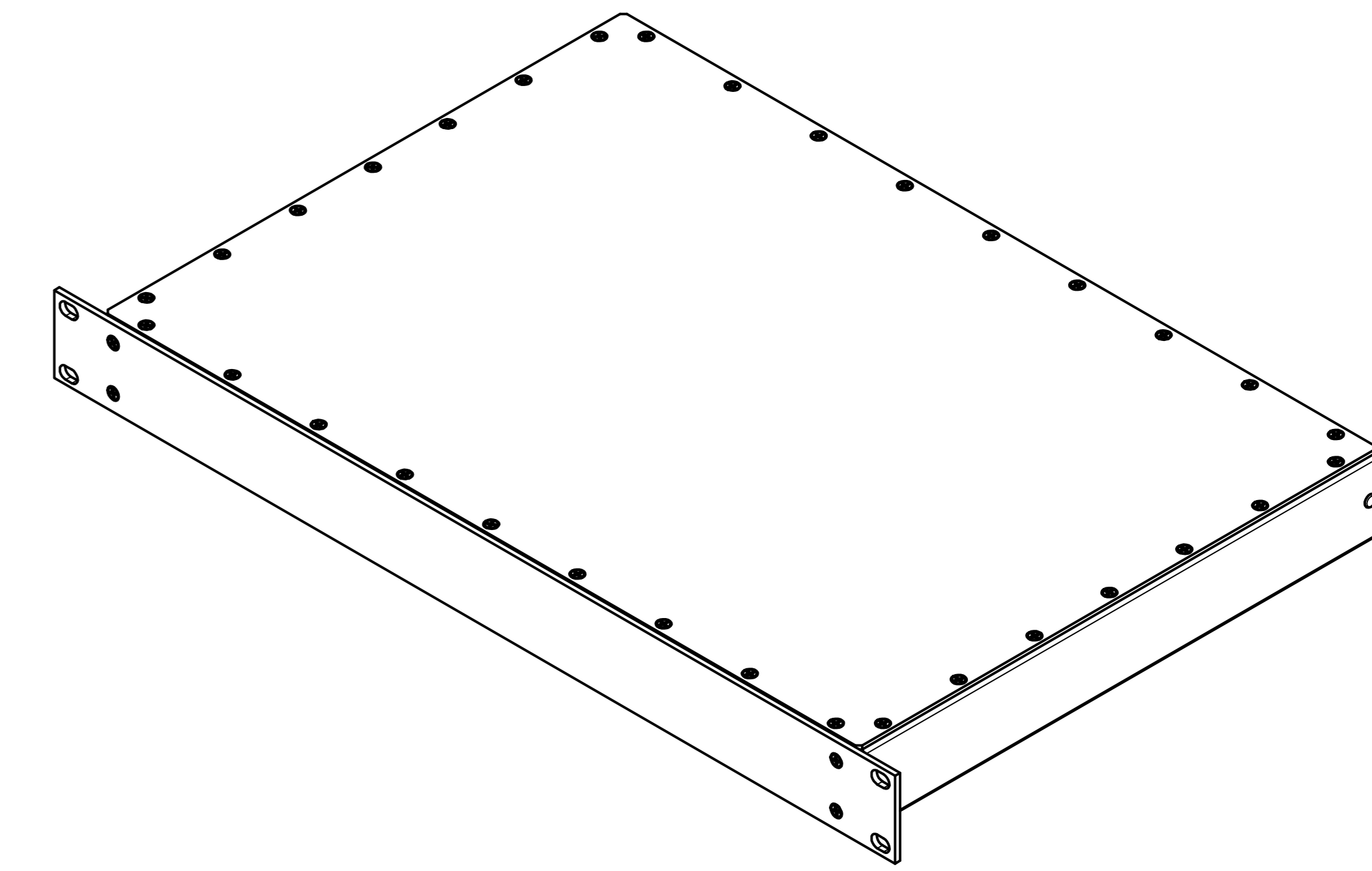


Unten / Back

Oben / Top

Bereich für kundenspezifische Ausbrüche / Area for customer specific breakouts

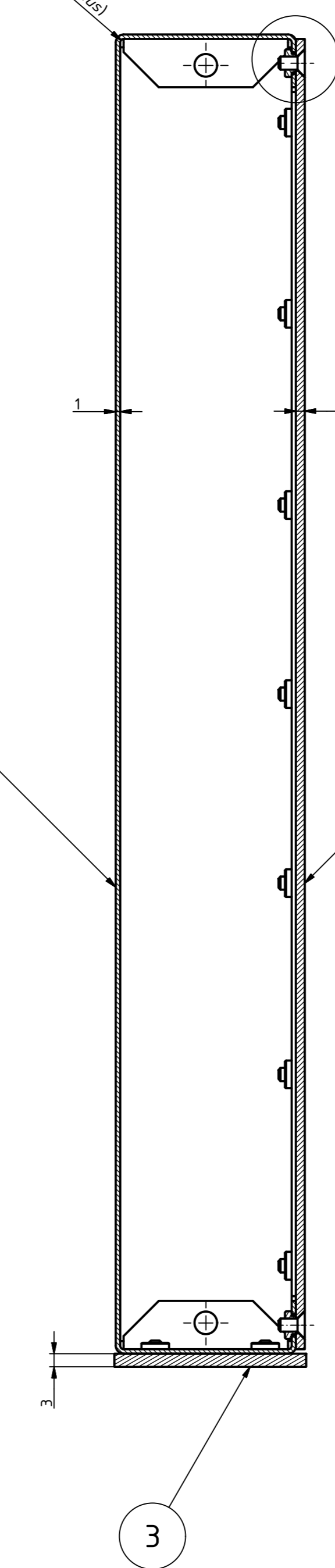
(1:2)
ISO-Ansicht / ISO-View



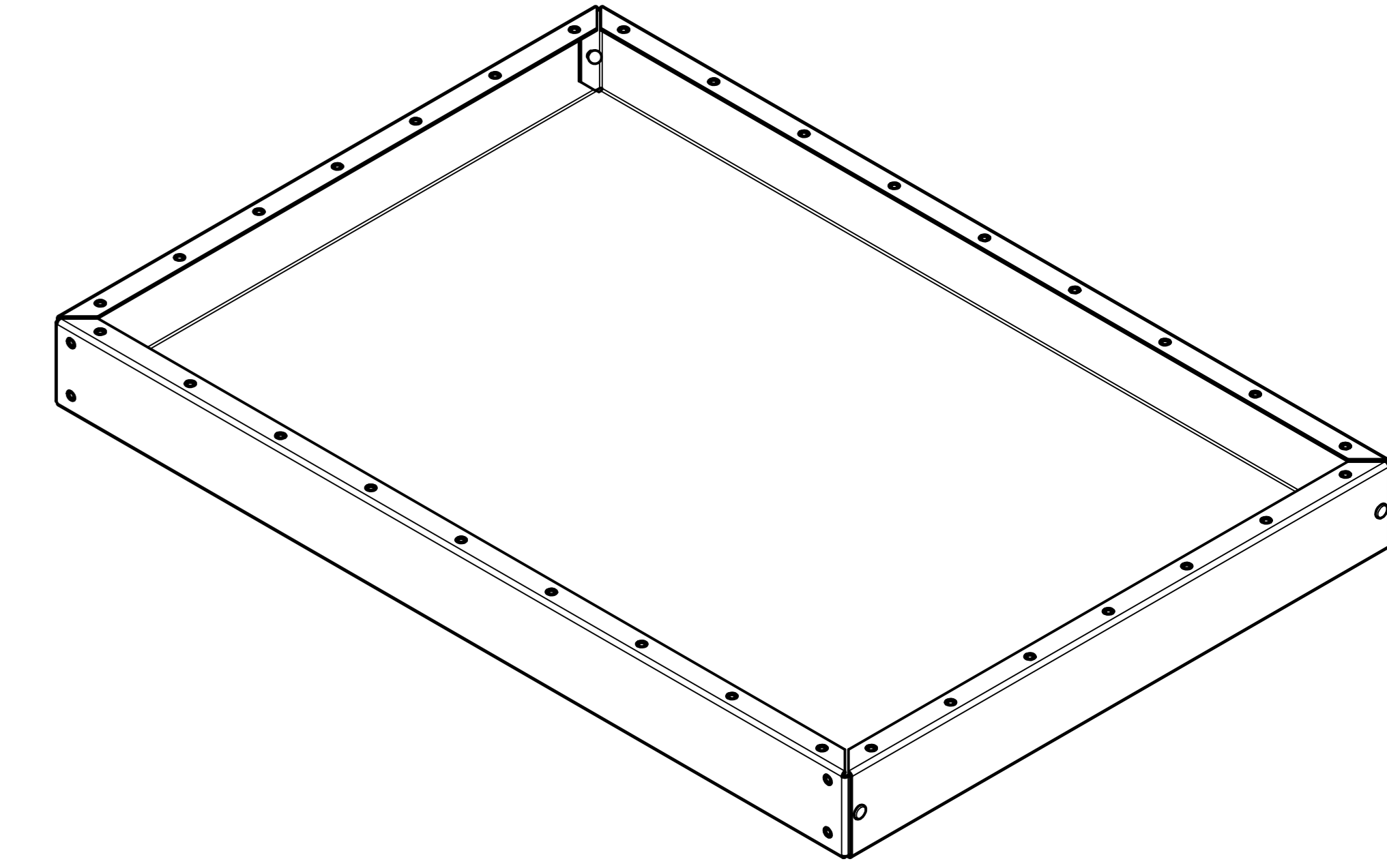
A-A (1:1)

Seitenansicht / Side view

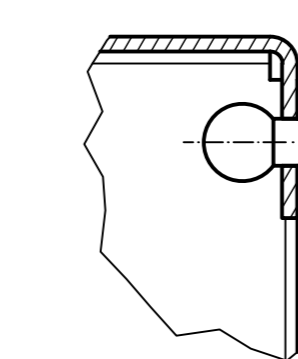
10,8 (Biege Radius / Bending radius)



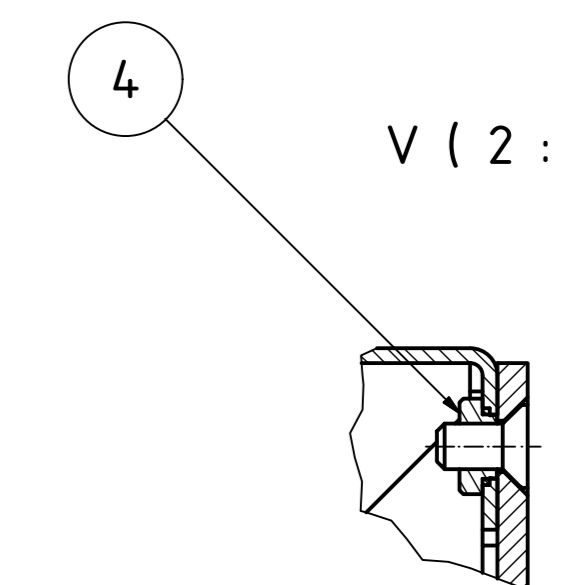
ISO-Ansicht/ISO-View (1:2)
Ohne Deckel, Frontplatte & Schrauben / Without lid, frontplate & screw



Z (2:1)



V (2:1)



Artikel-Nr. / Art.-No.	
Werkstoff / Material	
Allg. Tol.: DIN ISO 2768-mk für Bearbeitung	
Gen. Tol.: DIN ISO 2768-mk for machining	
Maßstab / Scale: 1:1 (1:2;2:1)	
Zeichnungs-Nr. / Drawing-No.: 0G 54.25.012.01	
Ben.: Erstellt nach Vorlage / Dim.: constructed by specification	
Artikel / Article: IC/Z 30180-EMV/EMC	
1HE/U, 84TE/HP, 300mm	
Grundzeichnung/Basic drawing	
Art.-Nr. / Art.-No.	Datum / DATE
DISK: 2903689.idw	Blatt / Sheet: 1 / 1
Datum / Date: 21.08.2016	Unterschrift / Signature
geprüft / checked	Fertigungsfreigabe / Production release
59000192	Verwendung für Pos.1 / Use for Pos.1
59000191	
59000337	

Stückliste / Bill of material

Pos.	St.	Modell / Model	Werkstoff / Material	Zeichnung / Drawing	Material-Nr.	Sonstiges / ect.
1	1	1HE Korpus-EMV / 1U corpus-EMC 1mm	EN AW-5754-H22-ND (Alu roh/Alu raw)	0A 5425.004_0		
2	1	1HE Deckel-EMV / 1U lid-EMC 2mm	EN AW-5754-H22-ND (Alu roh/Alu raw)	2A 5425.005_0		uml. 1mm kleiner wie Pos.1 / 1mm less than Pos.1
3	1	1HE Frontplatte-EMV / 1U frontplate-EMC 3mm	EN AW-5754-H22-EO, vorpassiviert/pre-passivated, Sichtseite nachträglich eloxiert, Schnittkanten blank / visible side anodized after machining, cutting edges raw aluminum	2A 5425.006_0		19"-Abmessungen (1HE) / 19" -size (1U)
4	36	KVT-CLS-M3-1	nichtrostender Stahl 18/8 (AISI 302/303) / Stainless steel 18/8 (AISI 302/303)		59000192	
5	4	BLNT 3339A AL/ST 3.0x6			59000191	
6	36	ISHR 5 M3x6 DIN 965	A2		59000337	