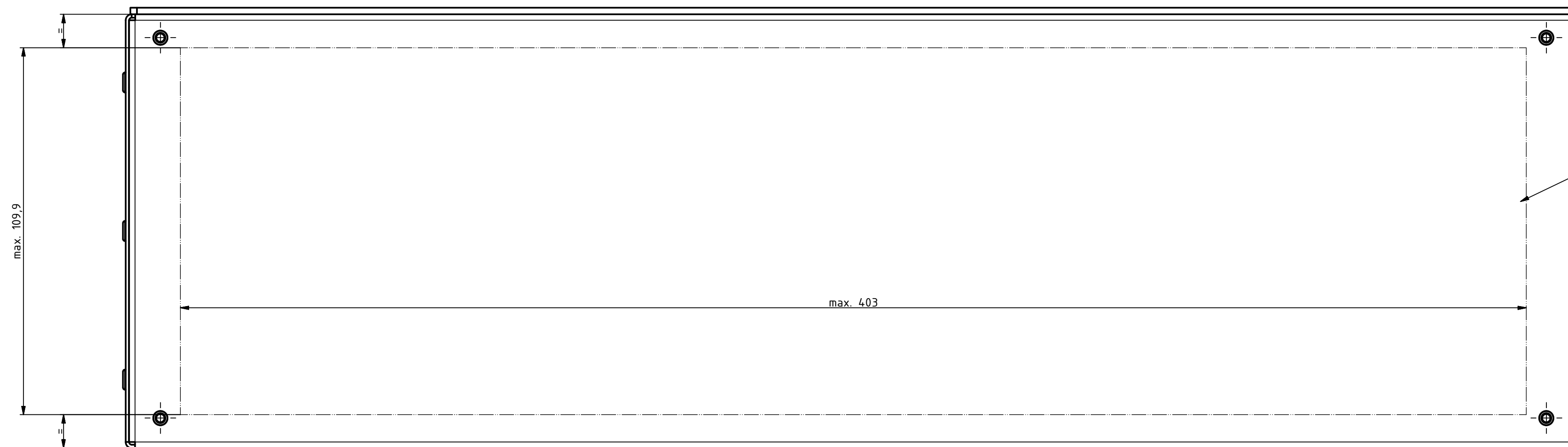
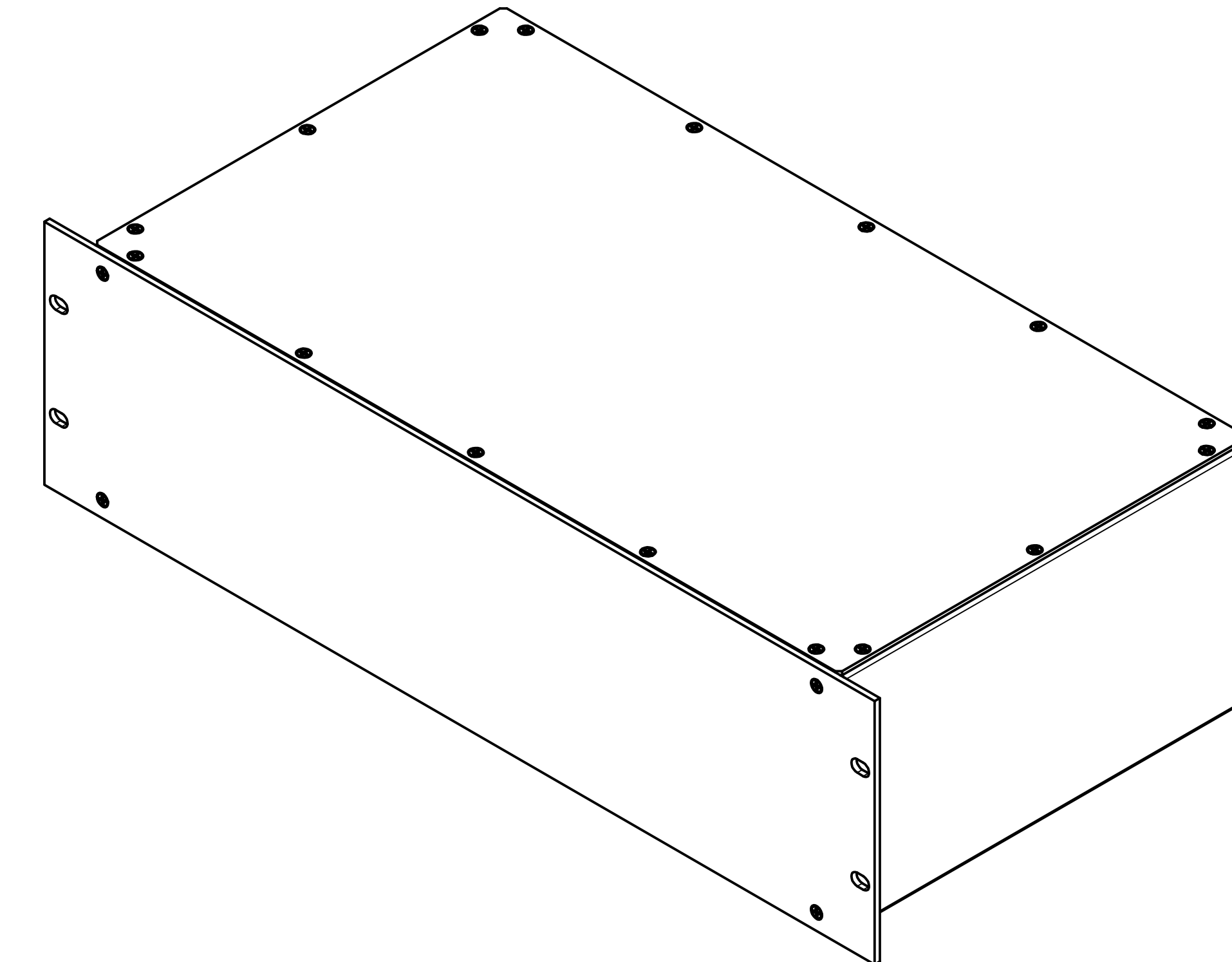


Frontansicht ohne Frontplatte / Front view without frontplate

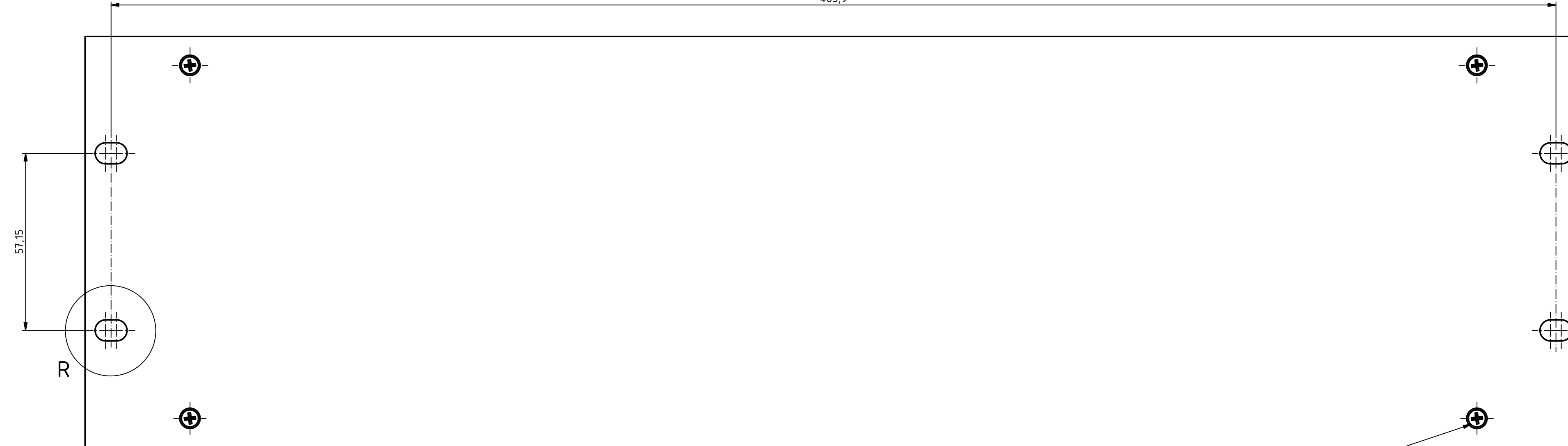


Bereich für kundenspezifische Ausbrüche / Area for customer specific breakouts

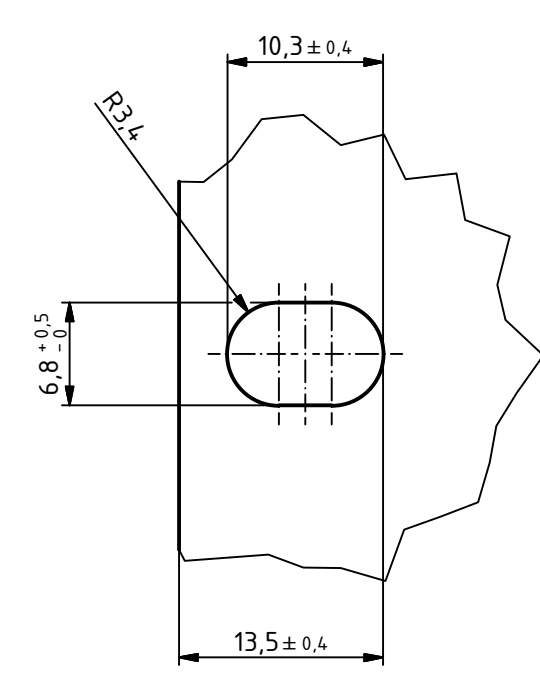
(1 : 2)
ISO-Ansicht / ISO-View



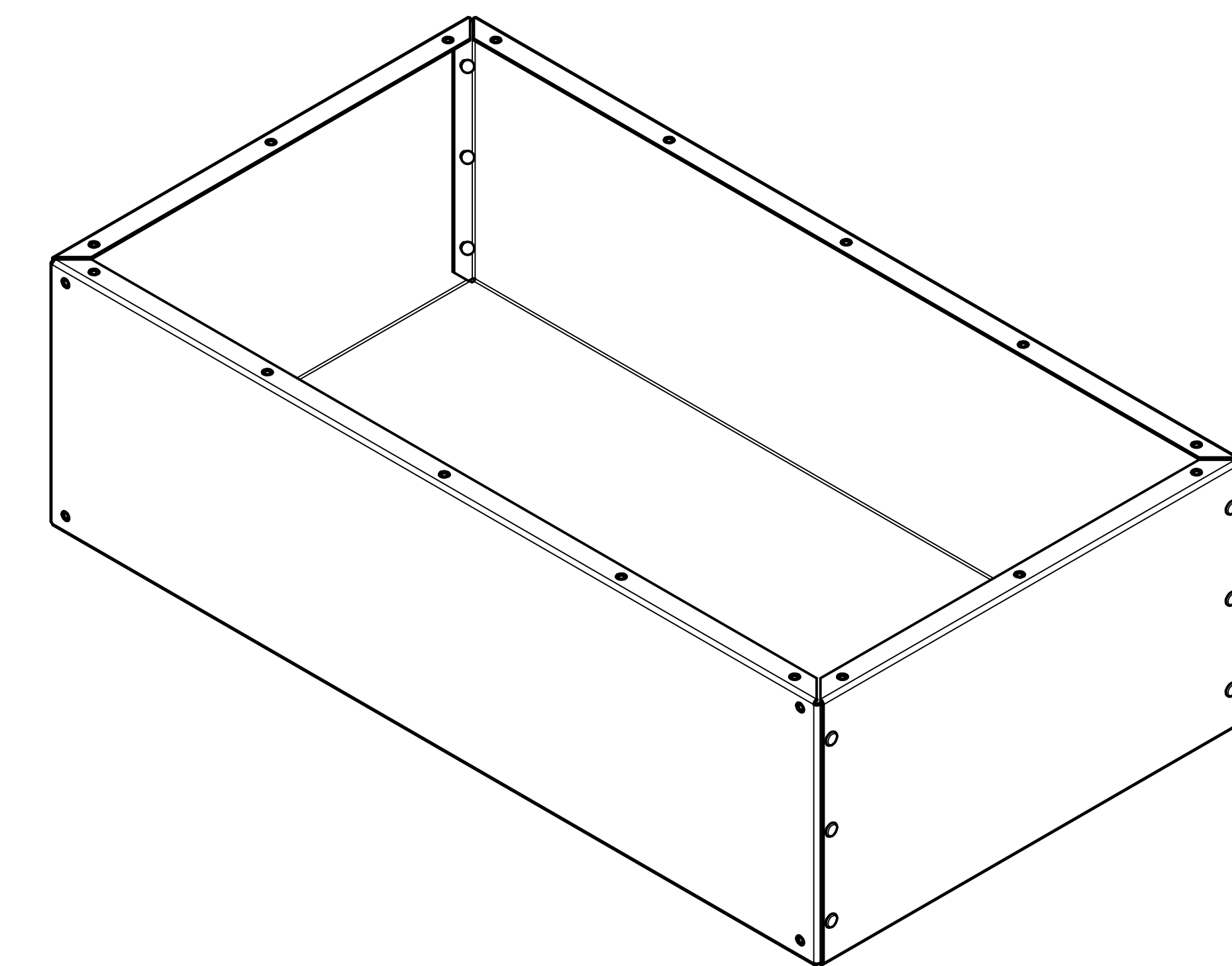
Frontansicht / Front view



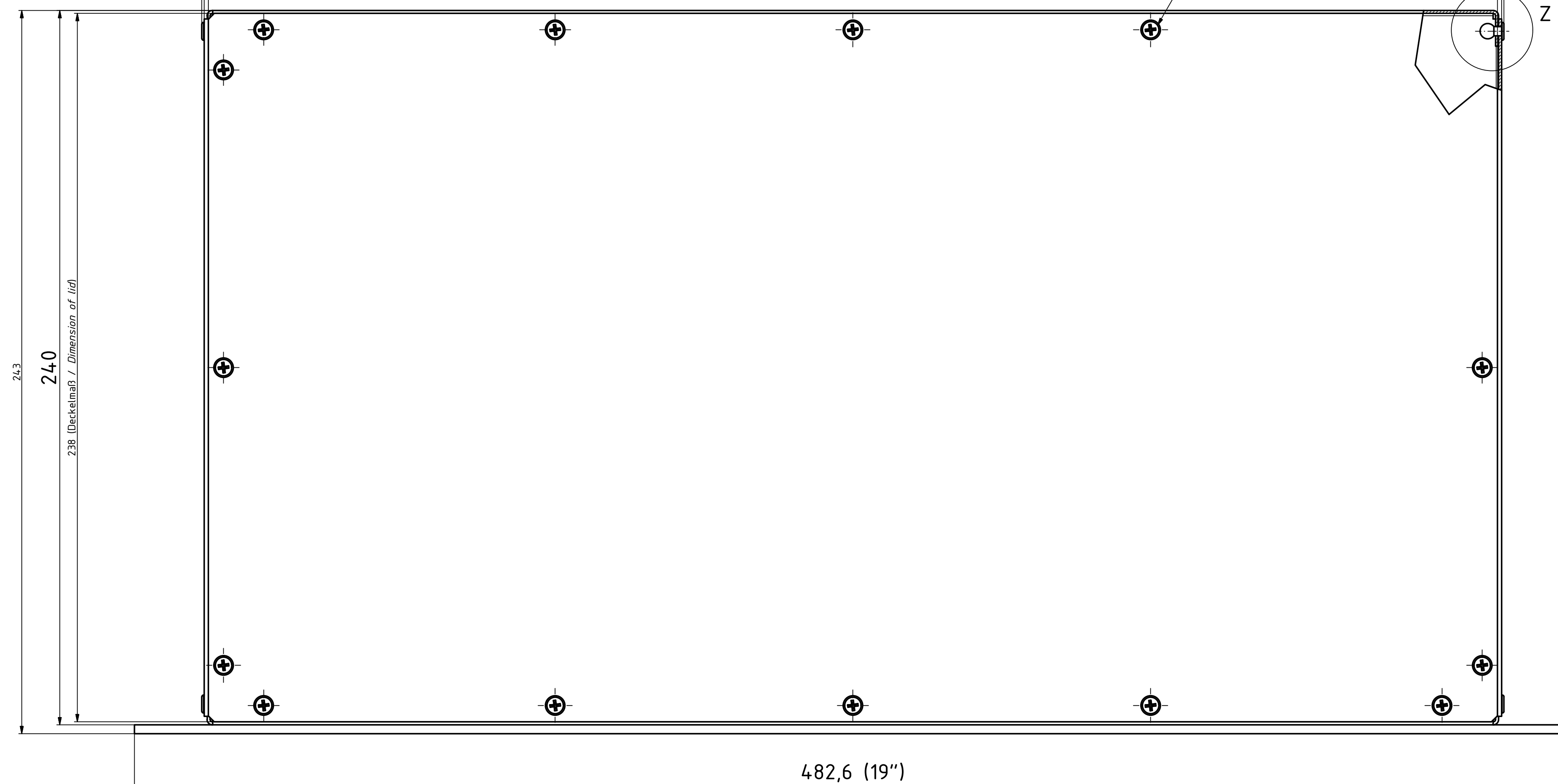
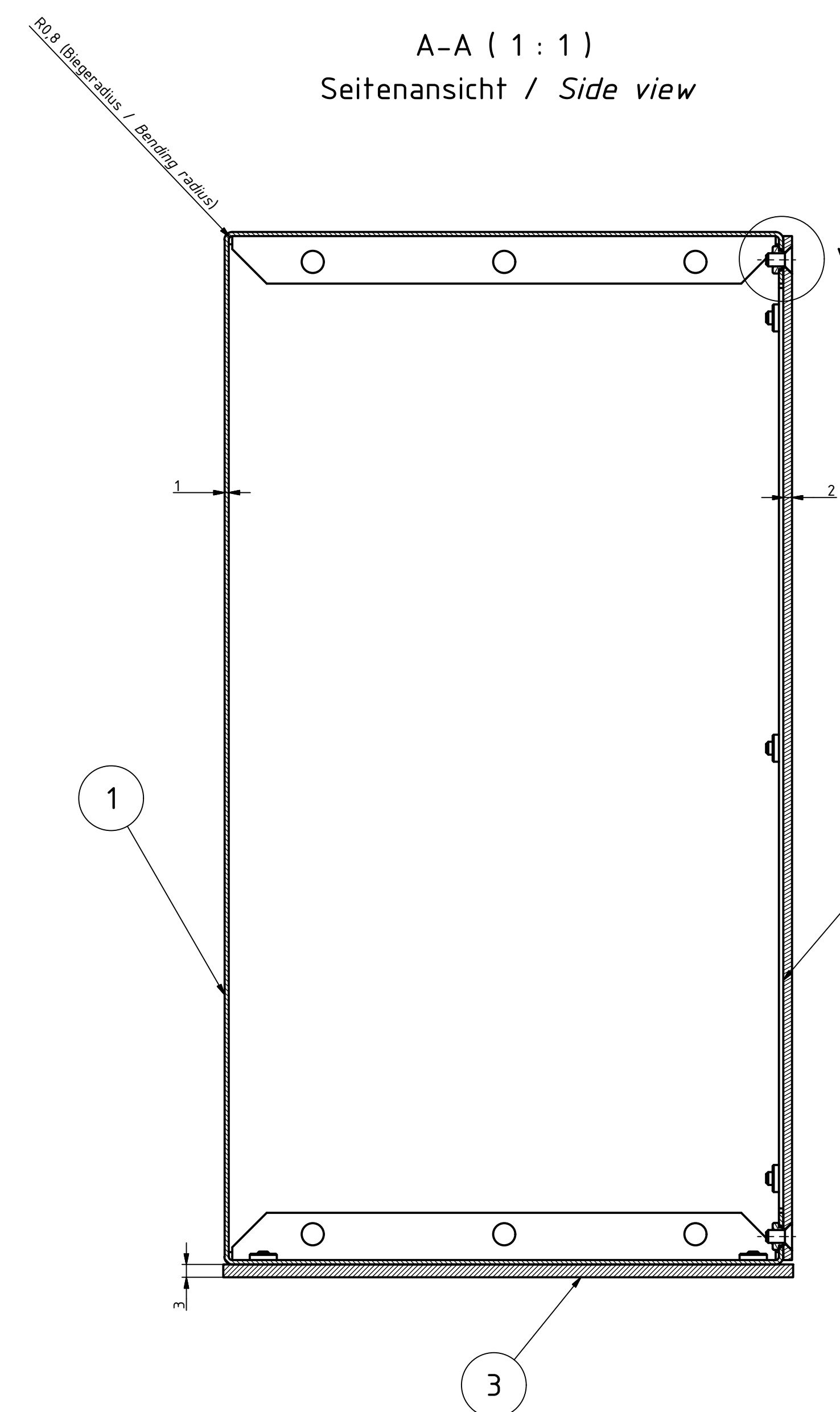
R (2 : 1)



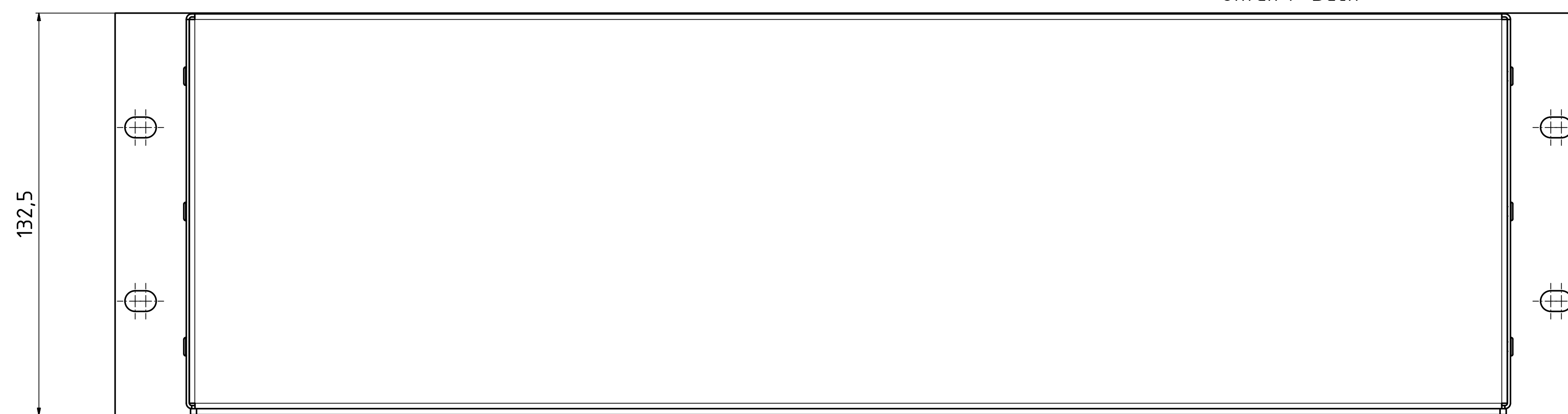
(1 : 2)
ISO-Ansicht / ISO-View (1 : 2)
Ohne Deckel, Frontplatte & Schrauben / Without lid, frontplate & screw



A-A (1 : 1)
Seitenansicht / Side view



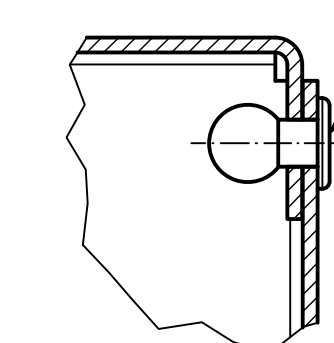
Unten / Back



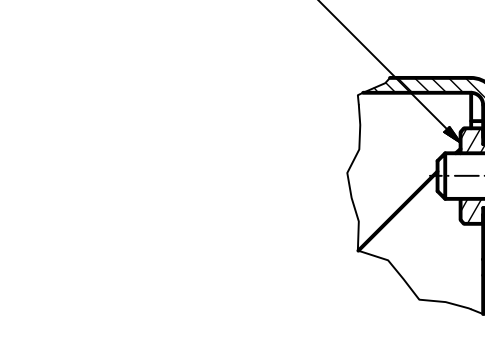
Rückansicht / Rear view

Oben / Top

Z (2 : 1)



V (2 : 1)



Artikel-Nr. / Art.-No.:	
Werkstoff- / Material:	
Allg. Tol.: DIN ISO 2768-mk für Bearbeitung / Gen. Tol.: DIN ISO 2768-mk for machining	
Maßstab / Scale: 1:1 (1:2;2:1)	
Zeichnungs-Nr. / Drawing-No.: 0G 54.25.020.01	
Bem.: Erstellt nach Vorlage / Dim.: constructed by specification	
Artikel / Article: IC/Z 24380	
3HE/U, 84 TE/HP, 240mm	
Grundzeichnung/Basic drawing	

Pos.	St.	Modell / Model	Werkstoff / Material	Zeichnung / Drawing	Material-Nr.	Sonstiges / ect.
1	1	3HE Korpus / 3U corpus 1mm	EN AW-5754-H22-NQ (Alu roh/Alu raw)	0A 5425.001_0		
2	1	3HE Deckel / 3U lid 2mm	EN AW-5754-H22-NQ (Alu roh/Alu raw)	2A 5425.002_0		umk. 1mm kleiner wie Pos.1 / 1mm less than Pos.1
3	1	3HE Frontplatte / 3U frontplate 3mm	EN-AW-5754-H22-EG-E6/C-0, Schnittkanten blank / Cutting edges raw aluminium	2A 5425.003_0		19"-Abmessungen (BWE) / 19"-size (B/E)
4	20	KVT CLS-M3-1	Nichrostender Stahl 18/8 (AISI 302/303) / Stainless steel 18/8 (AISI 302/303)		59000192	
5	12	BLINT F337A AL/ST 3,0x6			59000191	Verwendung für Pos.1 / Use for Pos.1
6	20	SHR S M3x6 DIN 965	Edelstahl / Stainless steel		59000337	