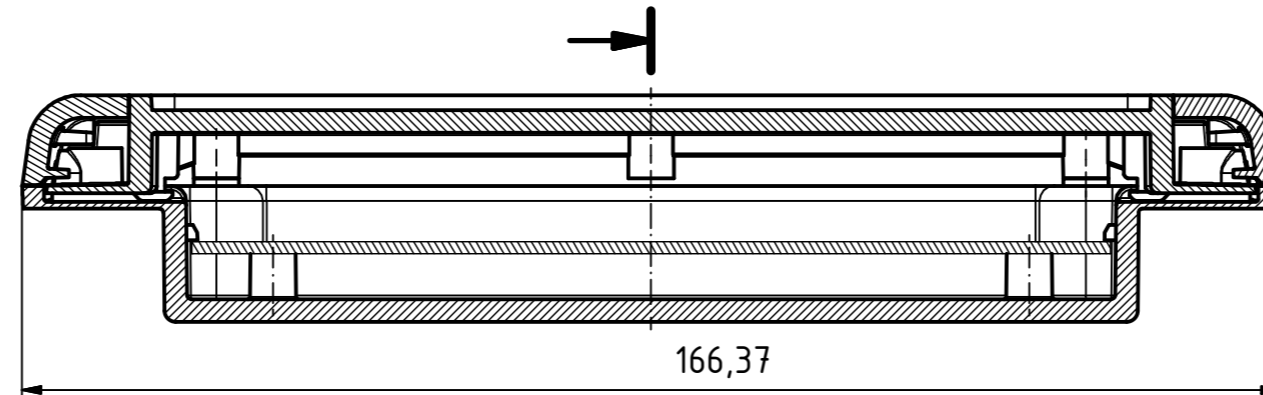
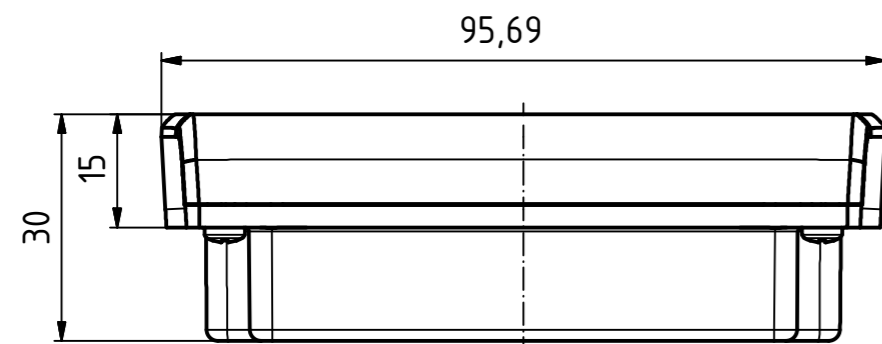
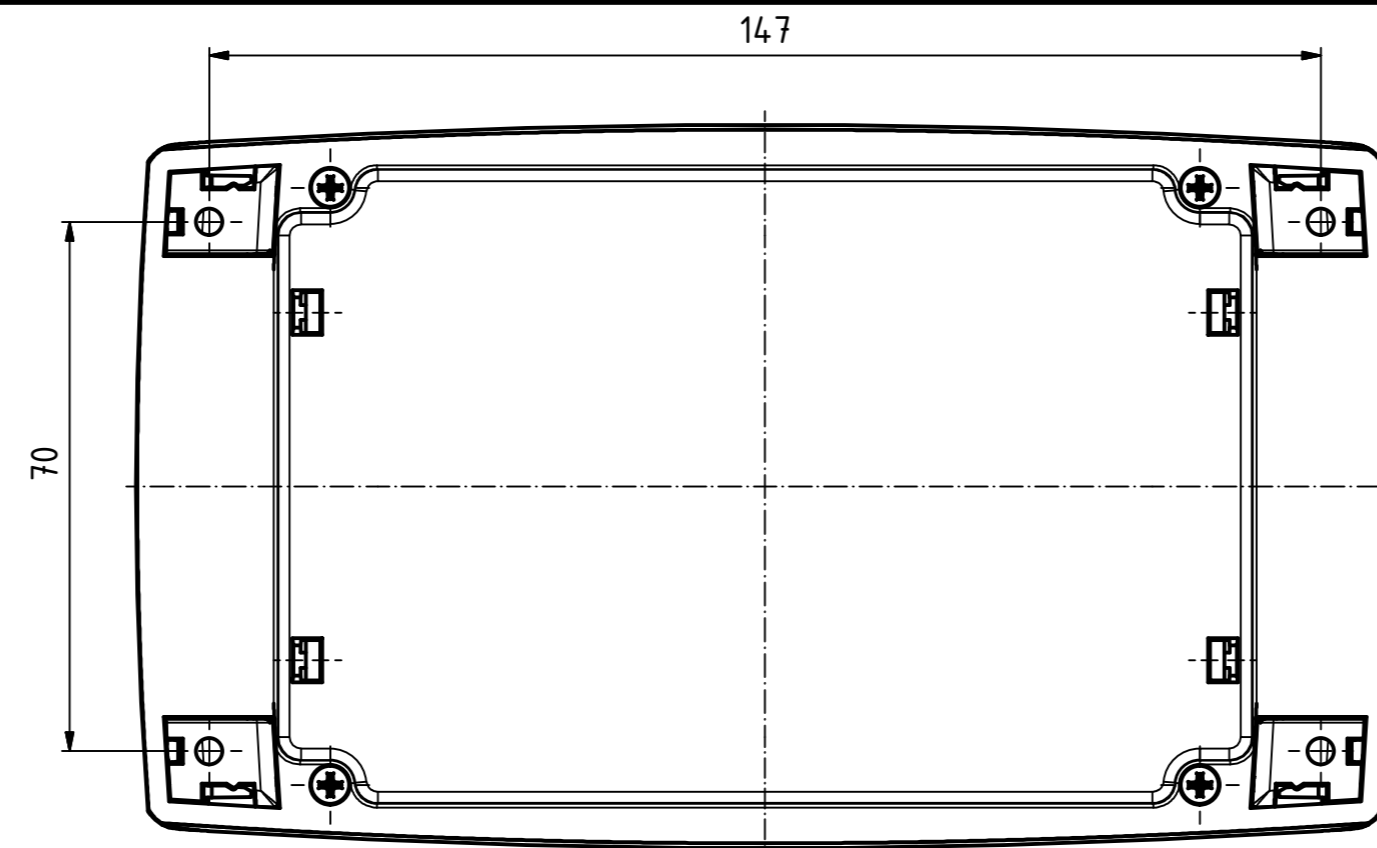


Montage:

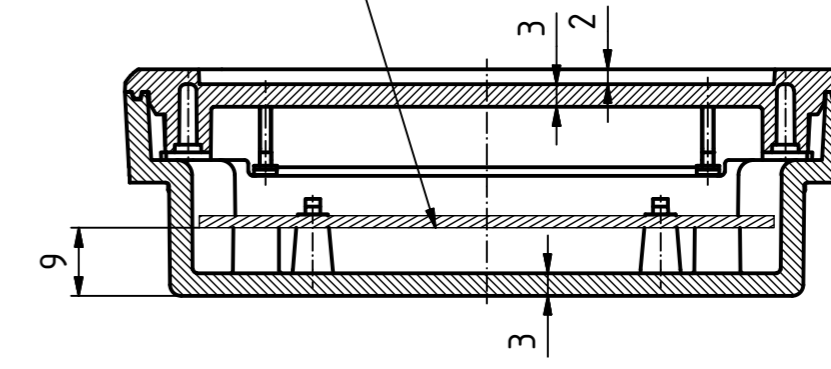
- Direkt, mit Einbauöffnung,
oder
- ohne Einbauöffnung mittels
Wandrahmen Circum C 1735 WR

Fitting:

- Direct, with fitting opening
or
- fitting without opening, with
wall frame Circum C 1735 WR

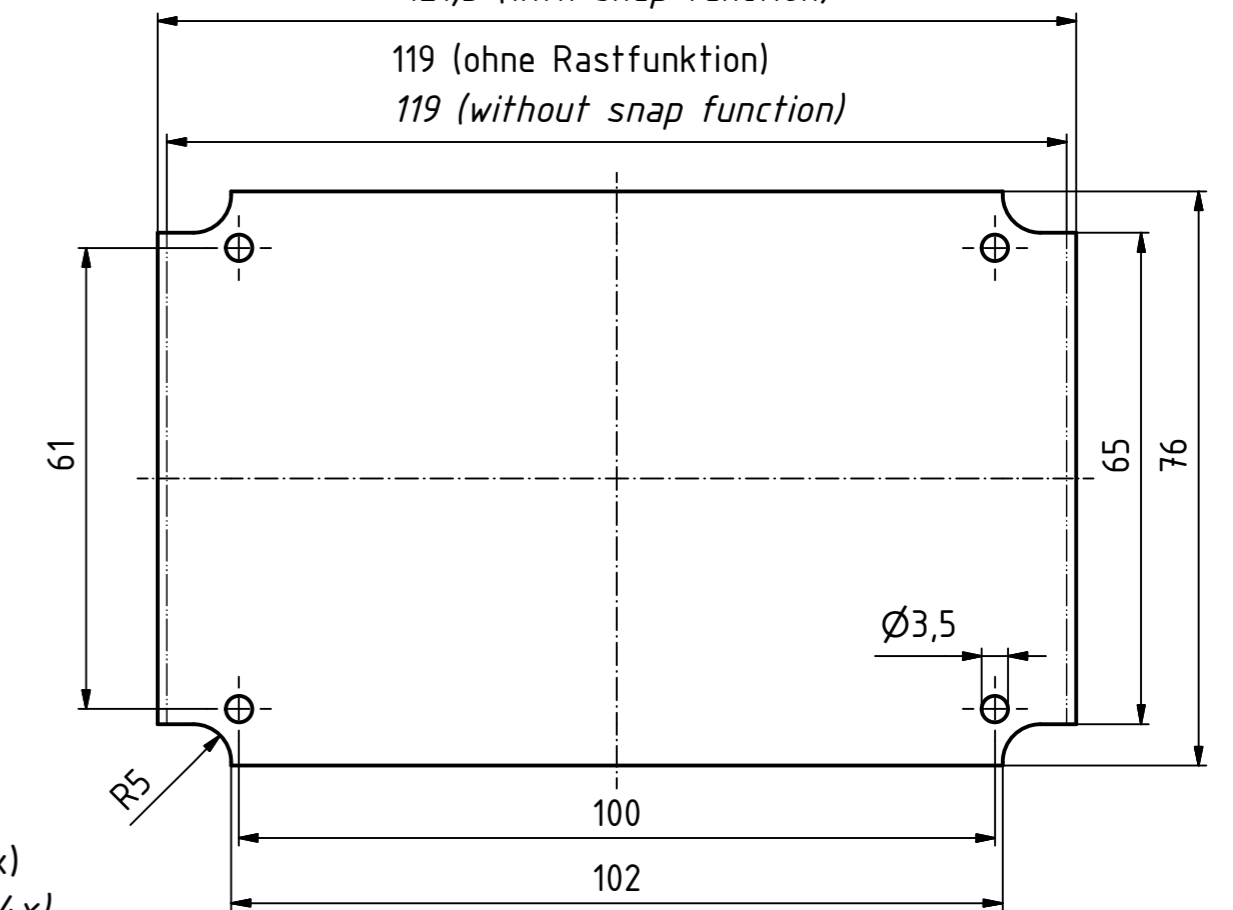


max. Platinenmaße:
max. PCB dimension:

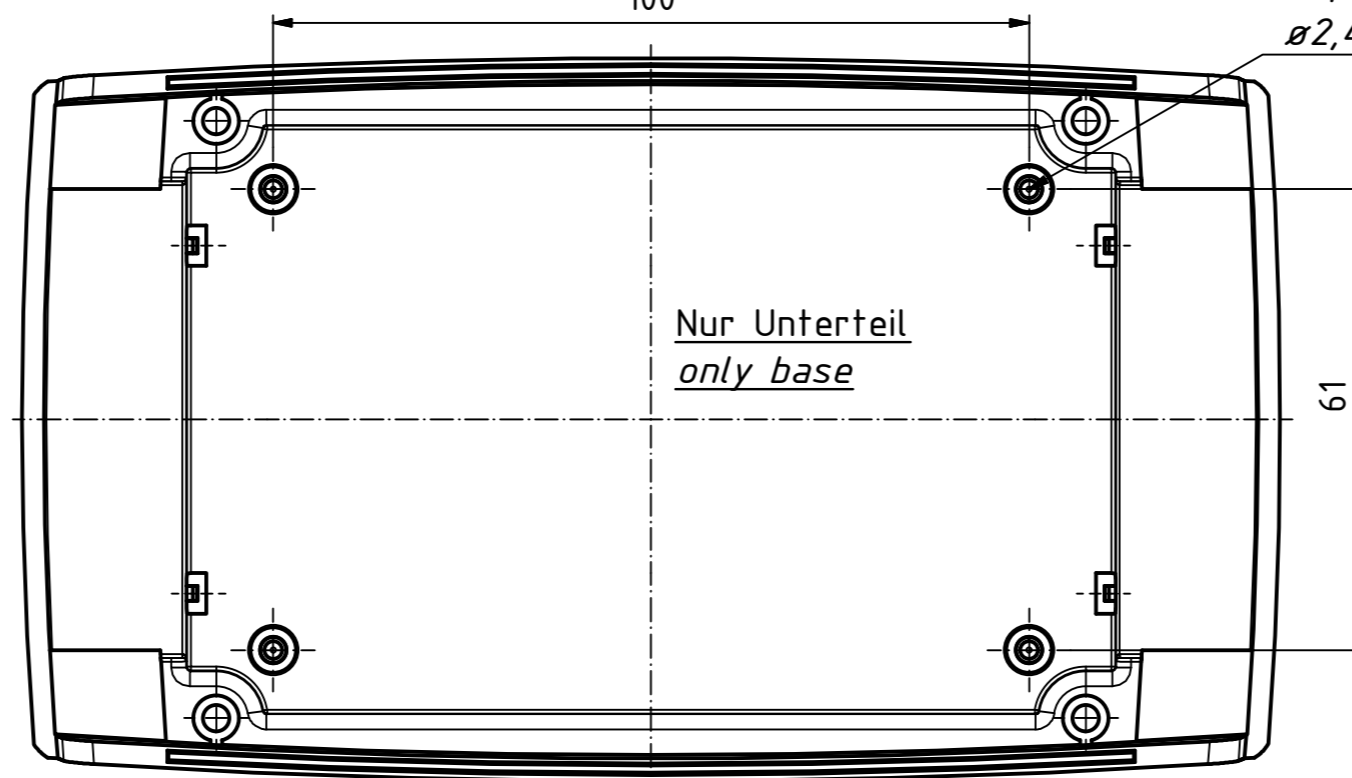
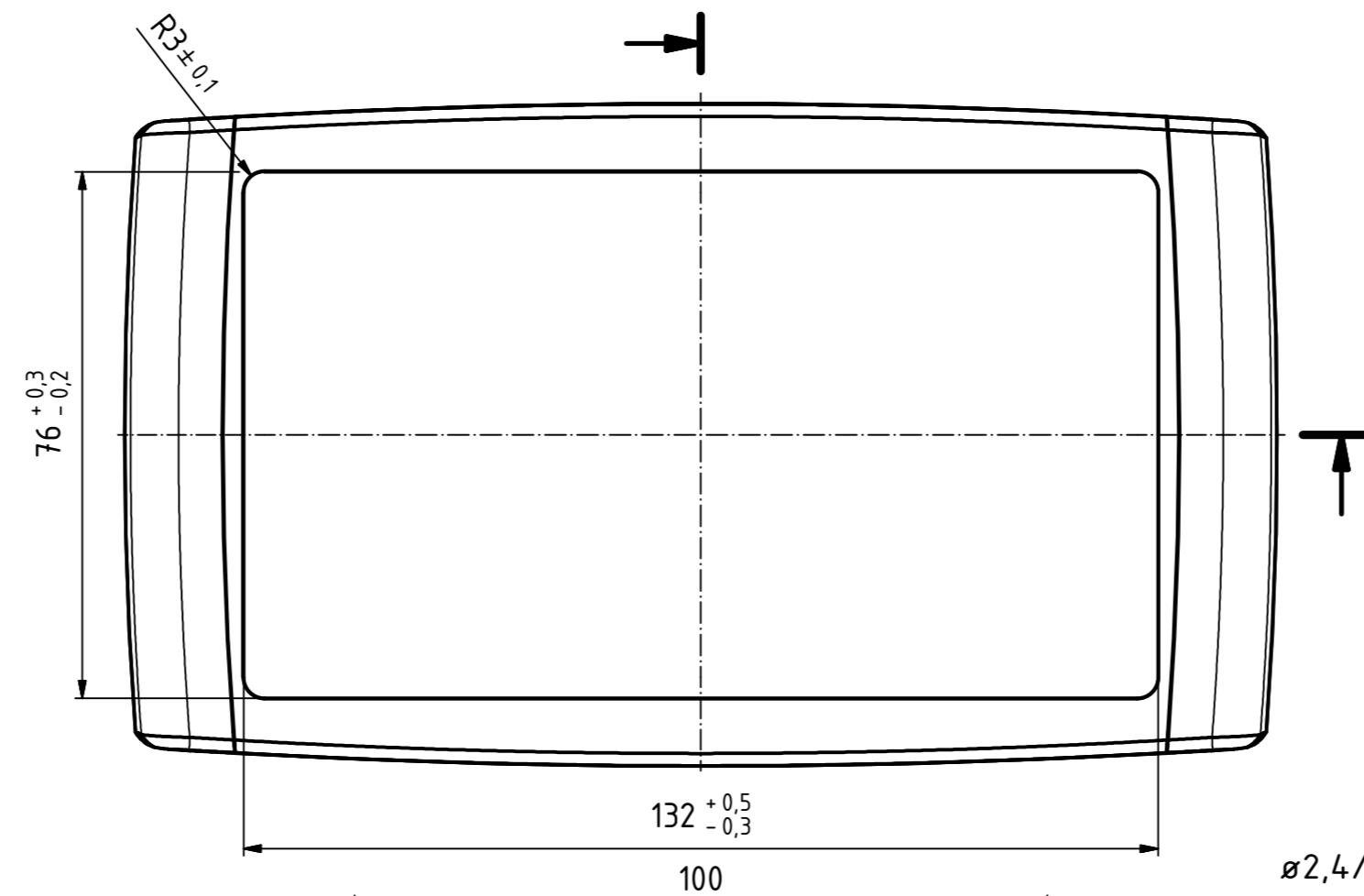
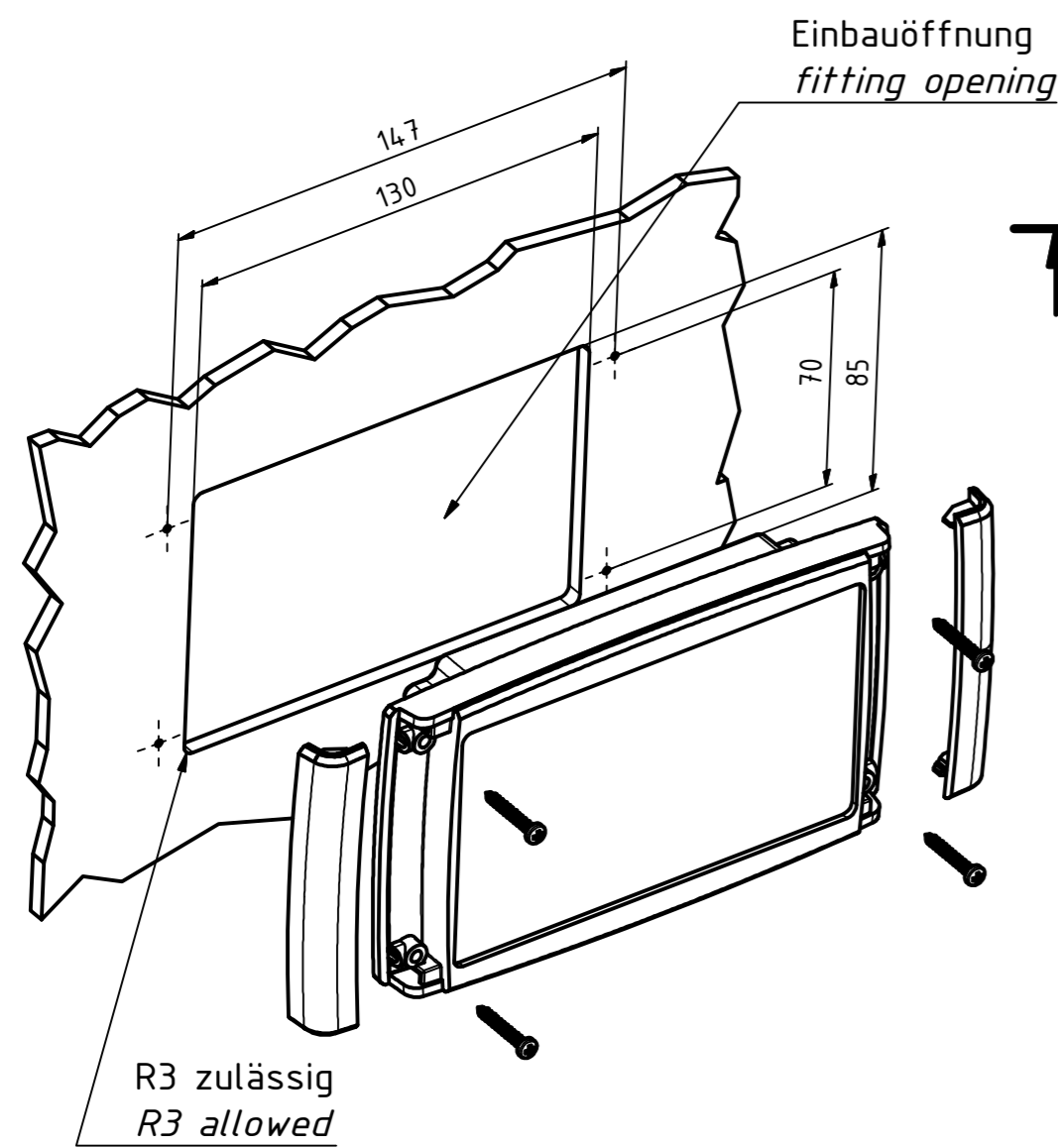


121,5 (mit Rastfunktion)
121,5 (with snap function)

119 (ohne Rastfunktion)
119 (without snap function)



ø2,4/7,5 tief (4x)
ø2,4/7,5 deep (4x)



Maßstab / Scale: 1:1 (1:2)

Zeichnungs-Nr. / Drawing-No.:
2K 5375.066.01

Artikel / Article:
Circum C 1735 F-NG
Katalogzeichnung
catalogue drawing

A.Nr. / Alt.No.:
Datum / Date:
DISK: 2803063.idw
Datum / Date: 08.07.2009 KH