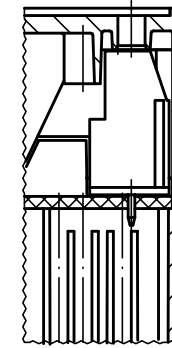
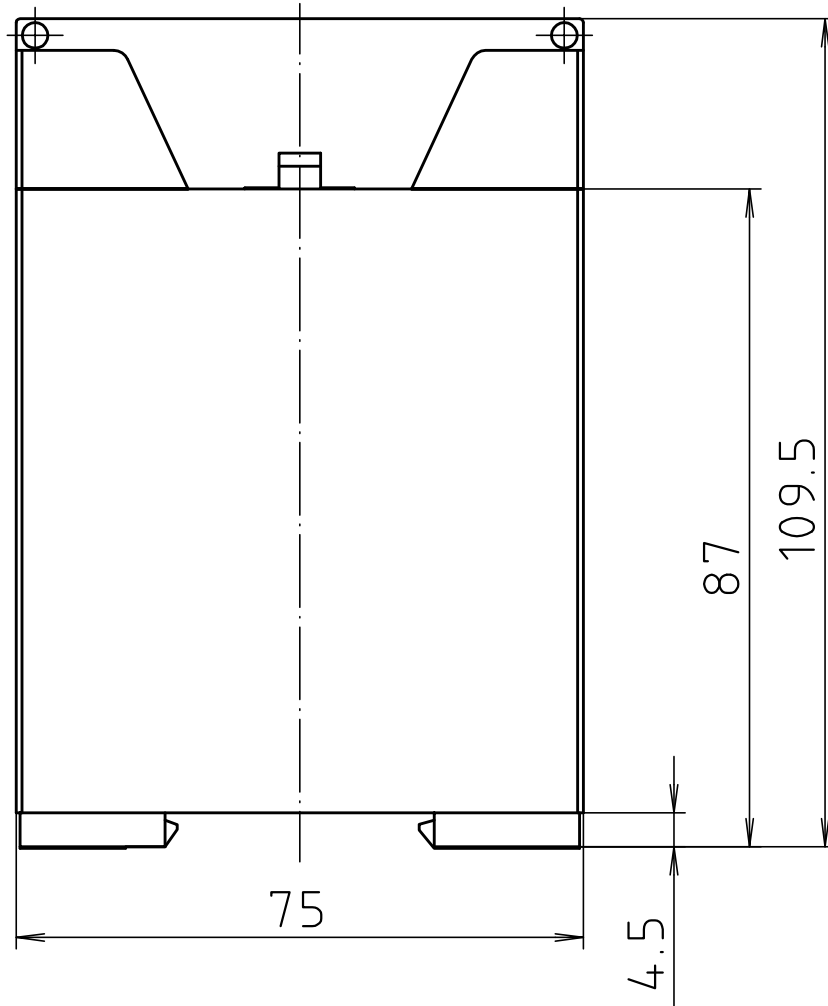
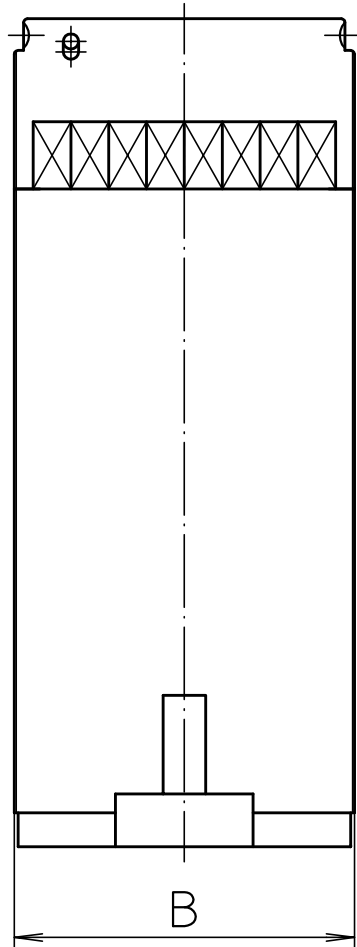
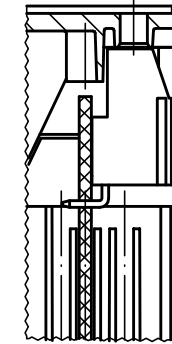


"Schutzvermerk nach DIN ISO 16016 beachten" "Please pay attention to copyright note DIN ISO 16016"

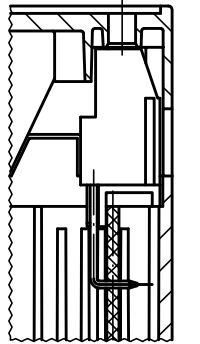
Zubehör / accessories



Anschlussklemme
AK 700/. V/
Connection terminals
AK 700/. V



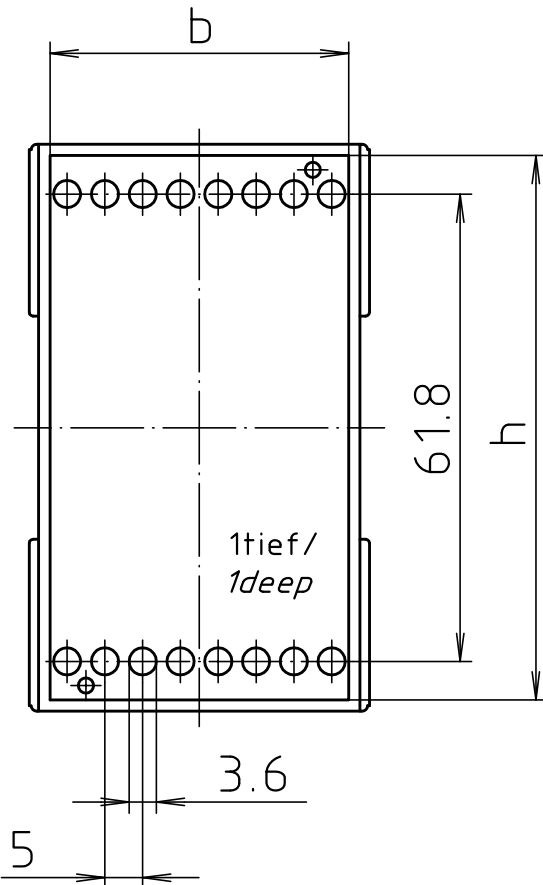
Anschlussklemme
AK 700/. H/
Connection terminals
AK 700/. H



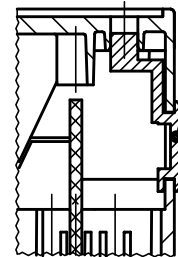
Anschlussklemme
AK 700/. HB/
Connection terminals
AK 700/. HB

Sonder:
Unterteil mit Seitenklappe
(CNS .. AK)
extra:
Base with side flap
(CNS .. AK)

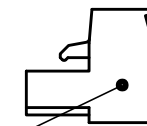
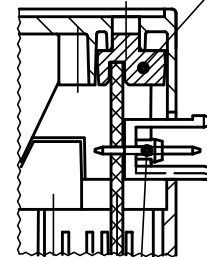
Haube hoch (CNH ___ H)
Haube niedrig (CNH ___ N)
Blindplatte (CNB 100)
STL-Adapter (CNA 100)/
High hood (CNH ___ H)
Low hood (CNH ___ N)
Blind bar CNB 100
STL adapter CNA 100



Blindplatte CNB 100/
Blind bar CNB 100



STL-Adapter CNA 100/
STL adapter CNA 100

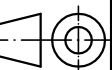


Anschlussklemme
AK 950/___ /
Connection terminals
AK 950/___

Stiffleiste STL 950/___ V/
pin bars STL 950/___ V

Modell / model	max. Klemmen/ terminal	B	b	h
CN 22 AK	8	22.5	17.0 ^{+0.2} / _{-0.1}	54 ^{+0.3} / _{-0.2}
CN 45 AK	16	45.0	39.5 ^{+0.2} / _{-0.1}	72 ^{+0.3} / _{-0.2}
CN 55 AK	20	55.0	49.5 ^{+0.2} / _{-0.1}	72 ^{+0.3} / _{-0.2}
CN 70 AK	26	70.0	64.5 ^{+0.3} / _{-0.2}	72 ^{+0.3} / _{-0.2}
CN 100 AK	38	100.0	94.5 ^{+0.4} / _{-0.2}	72 ^{+0.3} / _{-0.2}

Maßstab/
Scale: 1:1



Zeichnungs-Nr. / Drawing-No.:

3K 5180.001.05

Artikel / Article:
Artikelübersicht / article diagram
Klemmgehäuse / Terminal enclosure
CombiNorm Classic
CN .. AK (5mm Raster / grid)
Katalogzeichnung / Catalogue drawing

3626 20.08.02
3137 08.02.95
3115 05.01.95
3055 26.09.94

A.Nr /
Alt-No.:

Datum /
Date: 2 601 154
Datum / Date: 13.01.94 HR



BOPLA

A Phoenix Mecano Company