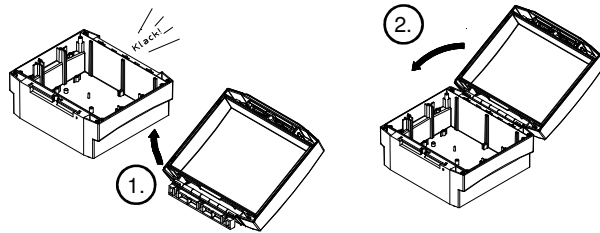
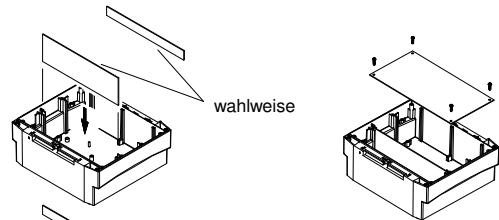


**1. Montage Oberteil BCD\_OT-G- / BCD\_OT-FSC-  
auf Unterteil (UT)**



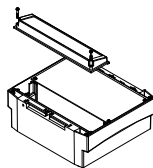
Das Scharnier wird an das Unterteil (UT) gerastet (1.). Der Deckel (OT-G-\_) wird anschließend durch zuschwenken geschlossen (2.).

**2. Montage der Trennplatten und des  
Klemmenraumdeckels**

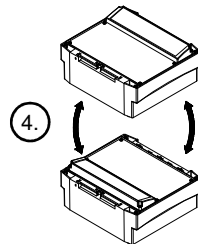


2. Durch Verschraubung der Frontplatte wird die Trennplatte fixiert.

1. Trennplatte einschieben

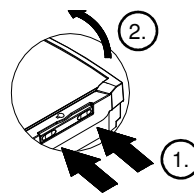


3. Klemmenraumdeckel (BCD-\_\_-KRD-\_) montieren. Der Klemmenraum kann dabei wahlweise oben oder unten positioniert werden (4.).



**Schließmechanismus der schwenkbaren Deckel  
BCD\_OT-G- / BCD\_OT-FSC-**

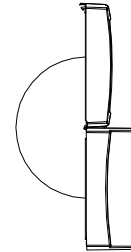
**Öffnen:**



Betätigungsmulden drücken



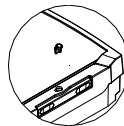
geschlossen



offen (über 180°) Deckel gegen herunterfallen gesichert

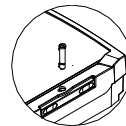
**Mechanismus:**

von Hand



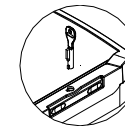
Schloßstopfen (im Lieferumfang)

mit Werkzeug



Sperrer (im Lieferumfang)

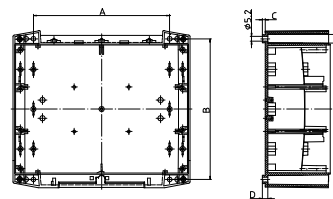
abschließbar



Schloß SHLO 402 (Zubehör)

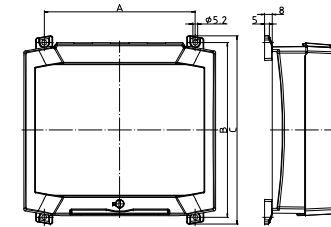
**3. Wandmontage**

**Ohne Wandlaschen:**

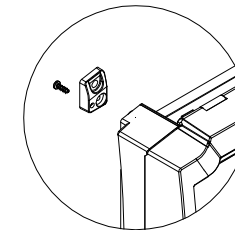


	A	B	C	D
BCD 310	275	265	4	7
BCD 400	355	320	4,5	7,5

**Mit Wandlaschen:**



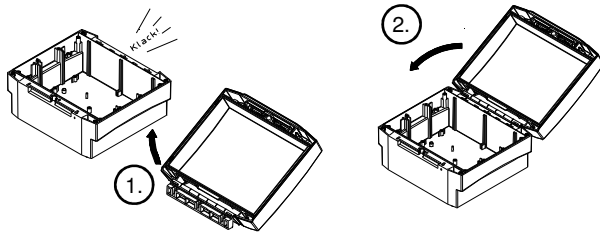
	A	B	C
BCD 310	281,5	291	305,3
BCD 400	361,5	346	360,3



**BOPLA Gehäuse Systeme GmbH**

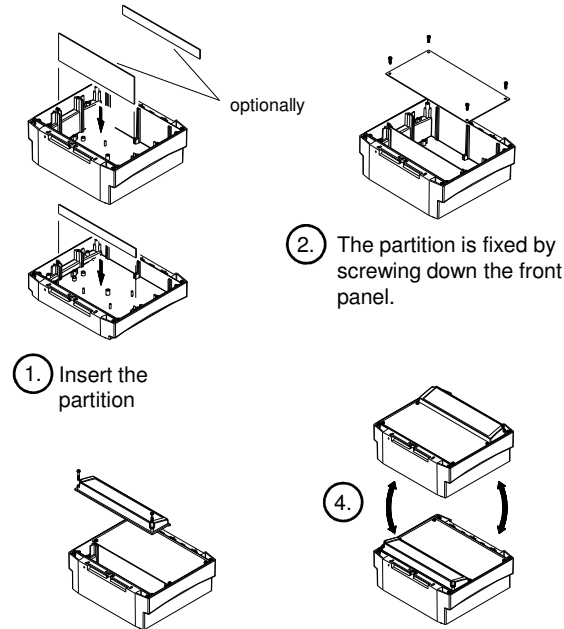
Borsigstr. 17-25  
D-32257 Bünde  
Tel.: 05223/969-0  
Fax: 05223/969-100  
www.bopla.de

**1. Assembly of lid BCD\_OT-G- / BCD\_OT-FSC- on base (UT)**



The hinge is latched on to the base (UT) (1.). The lid (OT-G-) is then closed via swivelling (2.).

**2. Assembly of the partition and the terminal compartment lid**



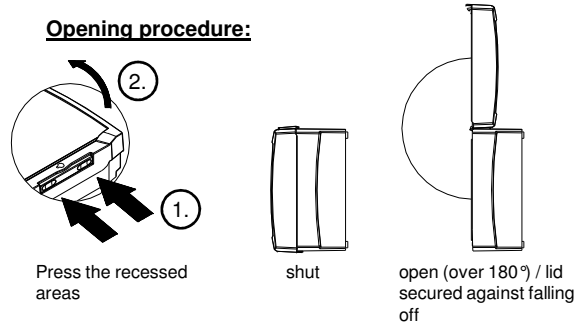
1. Insert the partition

2. The partition is fixed by screwing down the front panel.

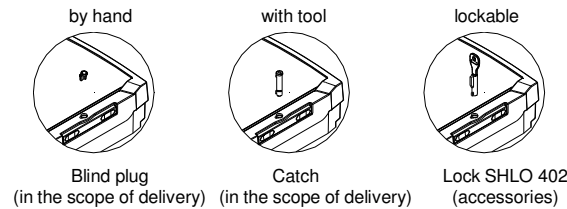
3. Assembly of the terminal compartment lid (BCD-\_\_-KRD-). The terminal compartment can be positioned optionally either at the top or at the bottom (4.).

**Closing mechanism for the swivel-to lid BCD\_OT-G- / BCD\_OT-FSC-**

**Opening procedure:**

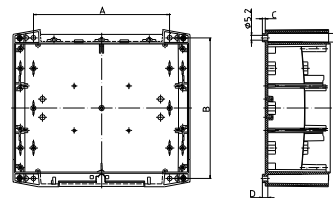


**Mechanism:**



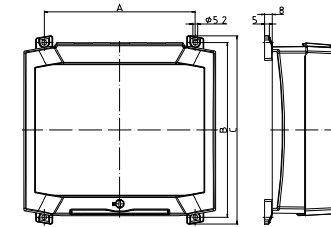
**3. Wall assembly**

**without wall brackets:**

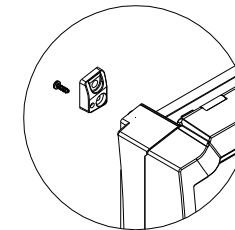


	A	B	C	D
BCD 310	275	265	4	7
BCD 400	355	320	4,5	7,5

**with wall brackets:**



	A	B	C
BCD 310	281,5	291	305,3
BCD 400	361,5	346	360,3



**BOPLA Gehäuse Systeme GmbH**

Borsigstr. 17-25  
D-32257 Bünde  
Tel.: +49 5223/969-0  
Fax: +49 5223/969-100  
www.bopla.de